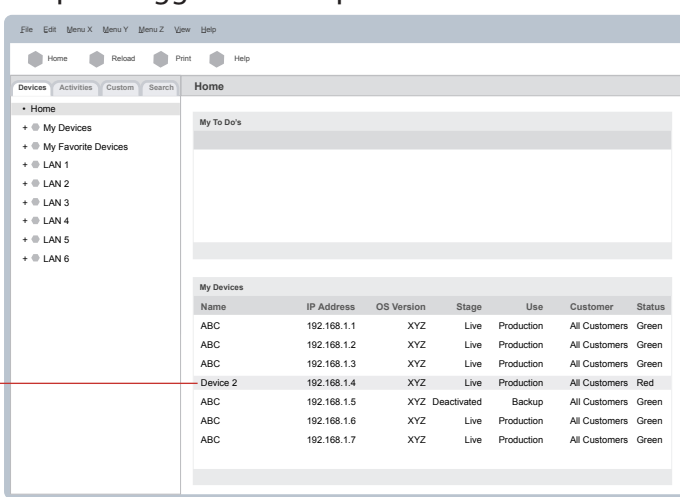


Navigation - Use Case 1 "Restarting a crashed device"

Things to notice:

- Persistence across views
- Efficiency of approach
- Completeness of approach

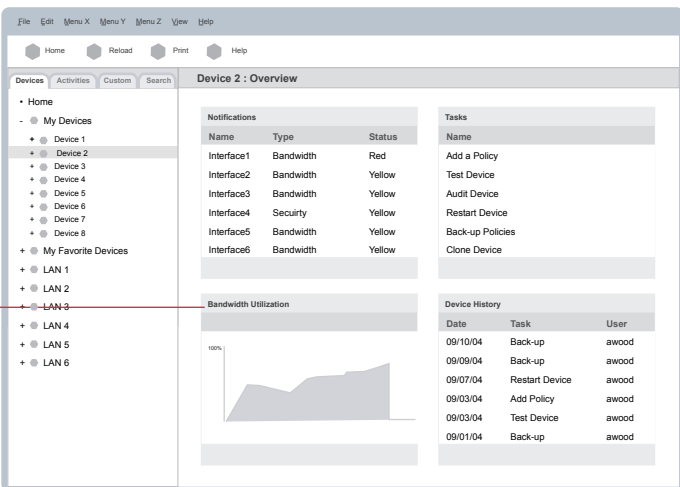
Step 1 - Logged In and Spot Trouble



Description:

- Just logged In
- Defaults to Devices Home Page
- Looks like a problem - Status Red on Device 2
- Navigate to Device 2

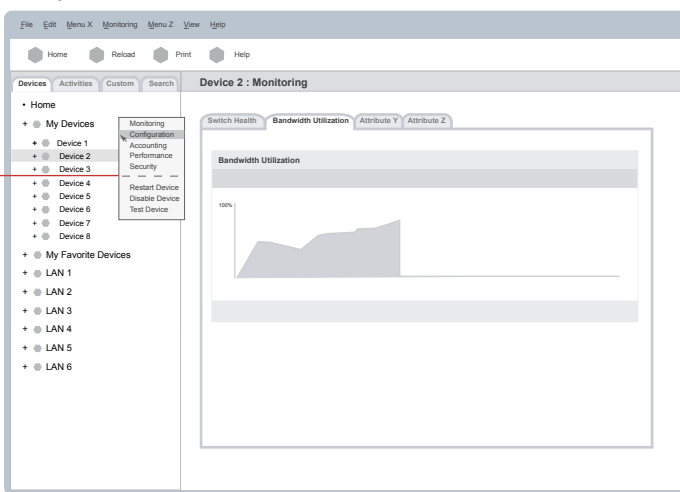
Step 2 - Review Device 2 Summary



Description:

- Review Device 2 Summary
- Select Bandwidth Utilization

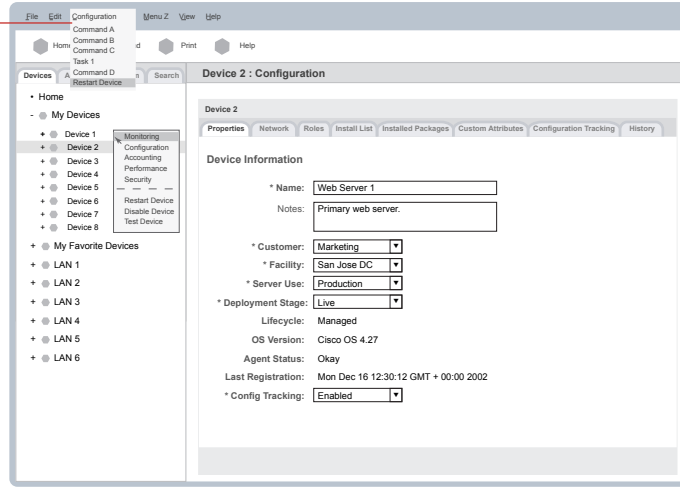
Step 3 - Monitor Device



Description:

- Check Monitoring for problems
- Identified problem - device crashed
- Right-click Device 2 and select Configuration

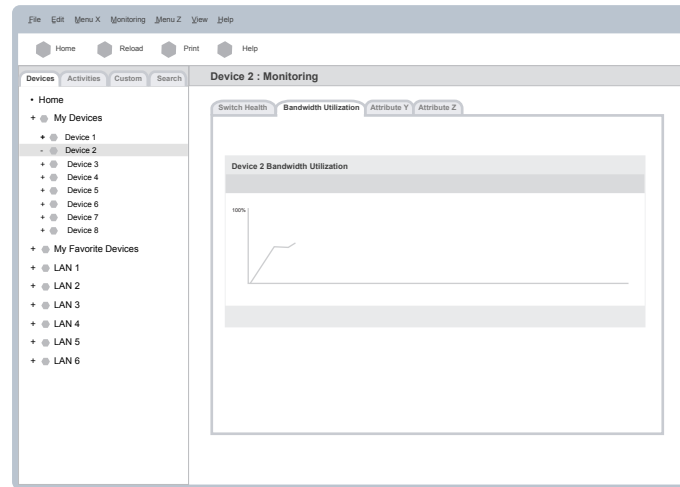
Step 4 - Check Configuration and Restart



Description:

- Check settings restart device using menu
- Right-click Device 2 and select Monitoring

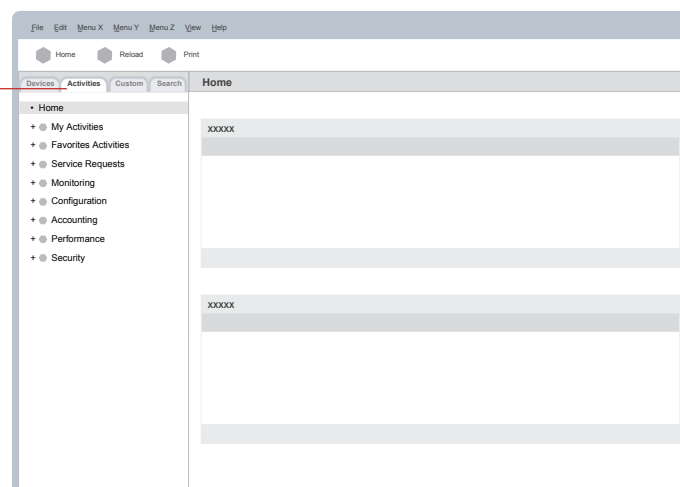
Step 5 - Monitor Device



Description:

- Select Bandwidth Utilization
- Review Bandwidth Utilization

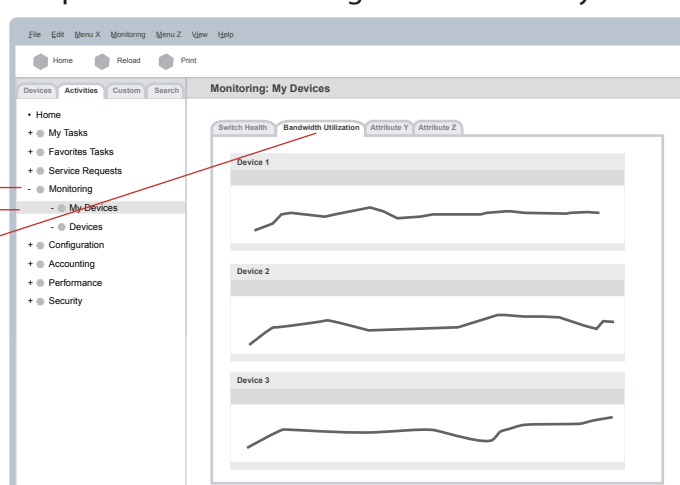
Step 6 - Switch to Activity View



Description:

- I want switch to task view to access Monitoring for all My Devices
- Initial Default for Activity Tab is Home

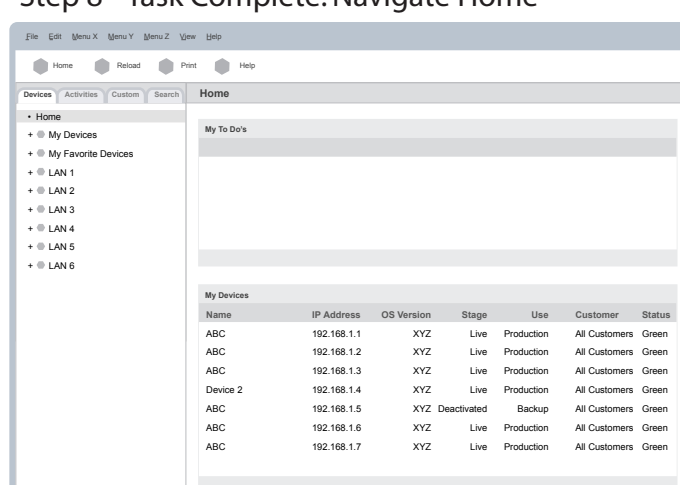
Step 7 - Select Monitoring & Monitor All My Devices



Description :

- In the Monitoring Activity View, select Bandwidth Utilization for My Devices
- Review Bandwidth Utilization for My Devices

Step 8 - Task Complete: Navigate Home



Description:

- Navigate Home
- All devices are status green